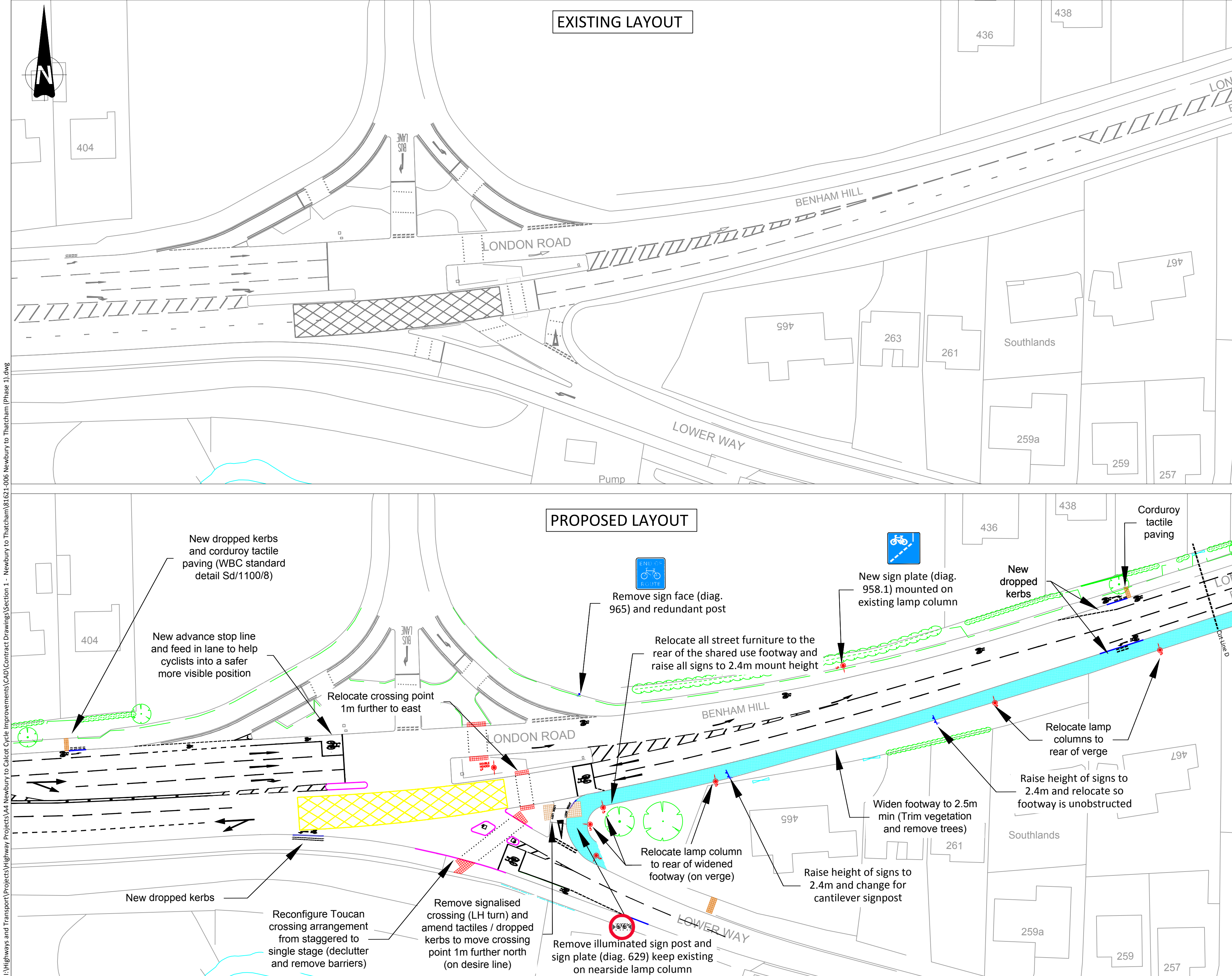


I:\Highways and Transport\Projects\Highway Projects\A4 Newbury to Calcot Cycle Improvements\CAD Contract Drawings\Section 1 - Newbury to Thatcham\81621-006 Newbury to Thatcham (Phase 1).dwg



- KEY**
- Dropped kerb
  - New kerbline
  - Footway widening
- NOTES**
- 1) All dimensions are shown in metres unless shown otherwise.
  - 2) This drawing shows a proposed option and is subject to change following the location, depth and height of existing utility services.
  - 3) WBC Standard Details must be adhered to at all times unless specified by the Overseeing Organisation.
  - 4) Prior to any excavations the contractor will establish the location of existing utility services.

B	
A	
REV	DESCRIPTION
DR	AU
REV DATE	
Status	

West Berkshire  
COUNCIL

Transport & Countryside | Council Offices  
Market Street | Newbury | RG14 5LD

Project Title

NCN422 Section 1 Phase 1  
Cycling Improvements

Drawing Title

Lower Way to Southdown  
Road (pg3 of 5)

Date	Drawn By	Checked By	Paper Size	Drawing Scale
26/07/17	JBK	NS	A2	1:500
Drawing Number	Revision			

81621-005-03